

PRODUCT DATASHEET

HQI-BT 400 W/D PRO

POWERSTAR HQI-T | Metal halide lamps with quartz technology for enclosed luminaires



AREAS OF APPLICATION

- Factories and workshops
- Sports halls and multi-purpose halls
- Industrial installations
- Docks and port facilities
- Marshaling yards, container transshipment facilities
- Buildings, monuments, bridges
- Approved only for use in enclosed luminaires
- Outdoor applications only in suitable luminaires

PRODUCT BENEFITS

- Output of up to 400 W
- High efficiency
- Long lifetime
- E40 screw base for simple lamp handling
- UV values significantly below the maximum permitted thresholds to IEC 61167 thanks to UV filter

PRODUCT FEATURES

- POWERSTAR quartz technology
- Light colors: neutral white (N), daylight (D)



TECHNICAL DATA

Electrical data

| | |
|-------------------------------|-----------------------------|
| Nominal wattage | 400.00 W |
| Rated wattage | 420.00 W |
| Lamp current | 4.0 A |
| PFC capacitor at 50 Hz | 45 µF ¹⁾ |
| Nominal voltage | 115 V |
| Ignition voltage | 4.0 / 5.0 kVp ²⁾ |

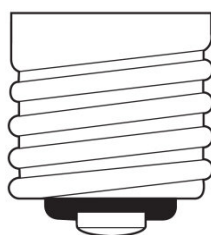
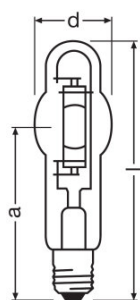
¹⁾ At rated voltage and $\cos \varphi \geq 0.9$

²⁾ Minimum / Maximum

Photometrical data

| | |
|---|----------|
| Rated lamp efficacy (standard condition) | 81 lm/W |
| Rated luminous flux | 34000 lm |
| Color rendering index Ra | 92 |
| Color temperature | 5500 K |
| Light color | 960 |
| Rated LLMF at 2,000 h | 0.92 |
| Rated LLMF at 4,000 h | 0.90 |
| Rated LLMF at 6,000 h | 0.87 |
| Rated LLMF at 8,000 h | 0.85 |
| Rated LLMF at 12,000 h | 0.81 |
| UV protection | Yes |

Dimensions & weight



E40
IEC 7004-24
DIN 49625

| | |
|----------------------------------|----------|
| Diameter | 62.0 mm |
| Length | 285.0 mm |
| Light center length (LCL) | 175.0 mm |
| Product weight | 200.00 g |

Temperatures & operating conditions

| | |
|--|--------|
| Maximum permitted outer bulb temperature | 500 °C |
| Maximum permitted base edge temperature | 250 °C |

Lifespan

| | |
|--|---------|
| Rated lamp survival factor at 2,000 h | 0.96 |
| Rated lamp survival factor at 4,000 h | 0.94 |
| Rated lamp survival factor at 6,000 h | 0.93 |
| Rated lamp survival factor at 8,000 h | 0.88 |
| Rated lamp survival factor at 12,000 h | 0.81 |
| Lifespan B50 | 16000 h |

Additional product data

| | |
|-----------------------------|-----------------------|
| Base (standard designation) | E40 |
| Product remark | With NAV control gear |
| Design / version | Clear |
| Mercury content | 59.0 mg |

Capabilities

| | |
|-----------------------------|-----|
| Dimmable | No |
| Burning position | Any |
| Enclosed luminaire required | Yes |

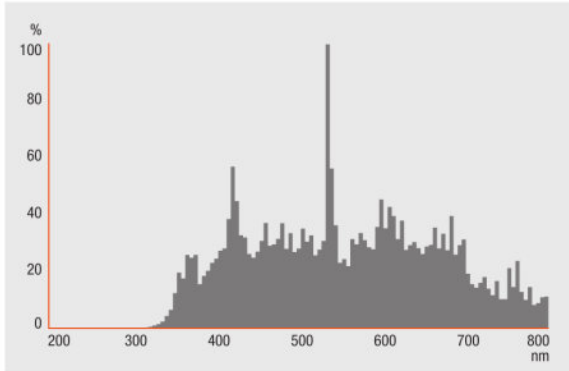
Certificates & standards

| | |
|-------------------------|---------------|
| Energy efficiency class | A |
| Energy consumption | 462 kWh/1000h |

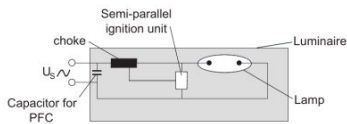
Country specific categorizations

| | |
|-------|---------------------------------|
| ILCOS | MT/UB-400/960-H/E/SL-E40-62/285 |
|-------|---------------------------------|

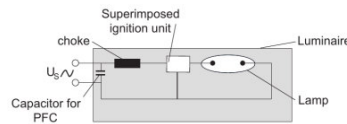
Light Distribution



Spectral power distribution



Circuit diagram



Circuit diagram

LOGISTICAL DATA

| Product code | Product description | Packaging unit (Pieces/Unit) | Dimensions (length x width x height) | Volume | Gross weight |
|---------------|---------------------|------------------------------|--------------------------------------|-----------------------|--------------|
| 4008321677860 | HQI-BT 400 W/D PRO | Shipping carton box 12 | 342 mm x 347 mm x 258 mm | 30.62 dm ³ | 3534.00 g |

The mentioned product code describes the smallest quantity unit which can be ordered. One shipping unit can contain one or more single products. When placing an order, for the quantity please enter single or multiples of a shipping unit.

DISCLAIMER

Subject to change without notice. Errors and omission excepted. Always make sure to use the most recent release.